



DOME
SOLAR
PHOTOVOLTAIC MOUNTING SOLUTIONS
UNITED KINGDOM



DOME
SOLAR
SOLUTIONS DE FIXATIONS PHOTOVOLTAÏQUES
FRANCE



CONTACT



🏠 Dome Solar - 7, route de la Forêt
Z.A. de la Forêt
44 830 BOUAYE FRANCE

☎ +33 (0)2 40 67 92 92

✉ info@dome-solar.com

@ www.dome-solar.com

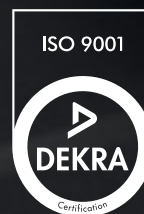
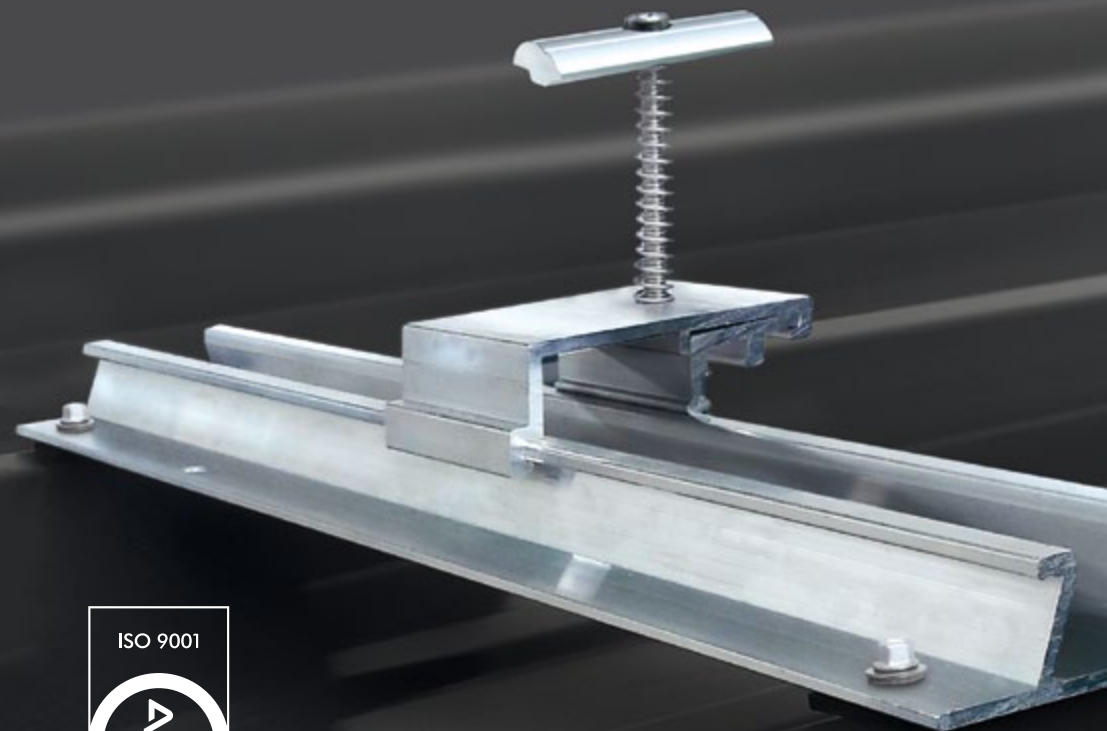
🏠 Dome Solar UK - Haymarket
House 28-29 Haymarket -
London SW1Y 4SP

☎ +44 (0)2070 243685

✉ export@dome-solar.com

@ www.dome-solar.com

* QUINTESENCE - version ENG 02



**PORTRAIT MOUNTING
SYSTEM FOR
METAL ROOFS**

**RB
SOLAR**

 **PATENTED
TECHNIQUE**

The RB-SOLAR mounting system allows portrait mode installation onto trapezoidal roofs.

THE RB-SOLAR ADVANTAGES



RELIABILITY

A robust and durable solution, 10-year warranty. Fully compliant with standards ensuring simplified integration onto the frame.



SIMPLICITY

Ease of installation with clipping of the rail and clamps. Simple fixing of clamps to the module.



ADAPTABILITY

Universal clamps for all types of module thicknesses.



QUALITY

Premium components made of aluminum.

TECHNICAL CHARACTERISTICS

USE CONDITIONS	New or renovated roof, with total or partial coverage
TYPE OF SUPPORT	Standard steel tray or other
MODULE POSITION	Portrait
MATERIAL	Aluminum and stainless steel
SYSTEM WEIGHT	300 g/m ² excluding the module
SYSTEM COMPONENTS	<ul style="list-style-type: none"> • 36 cm Rails • Universal and external clamps • Locking screws
OPTIONS	Module Grounding Connector (MGC), Rail Grounding Connector (RGC) and cable guide

